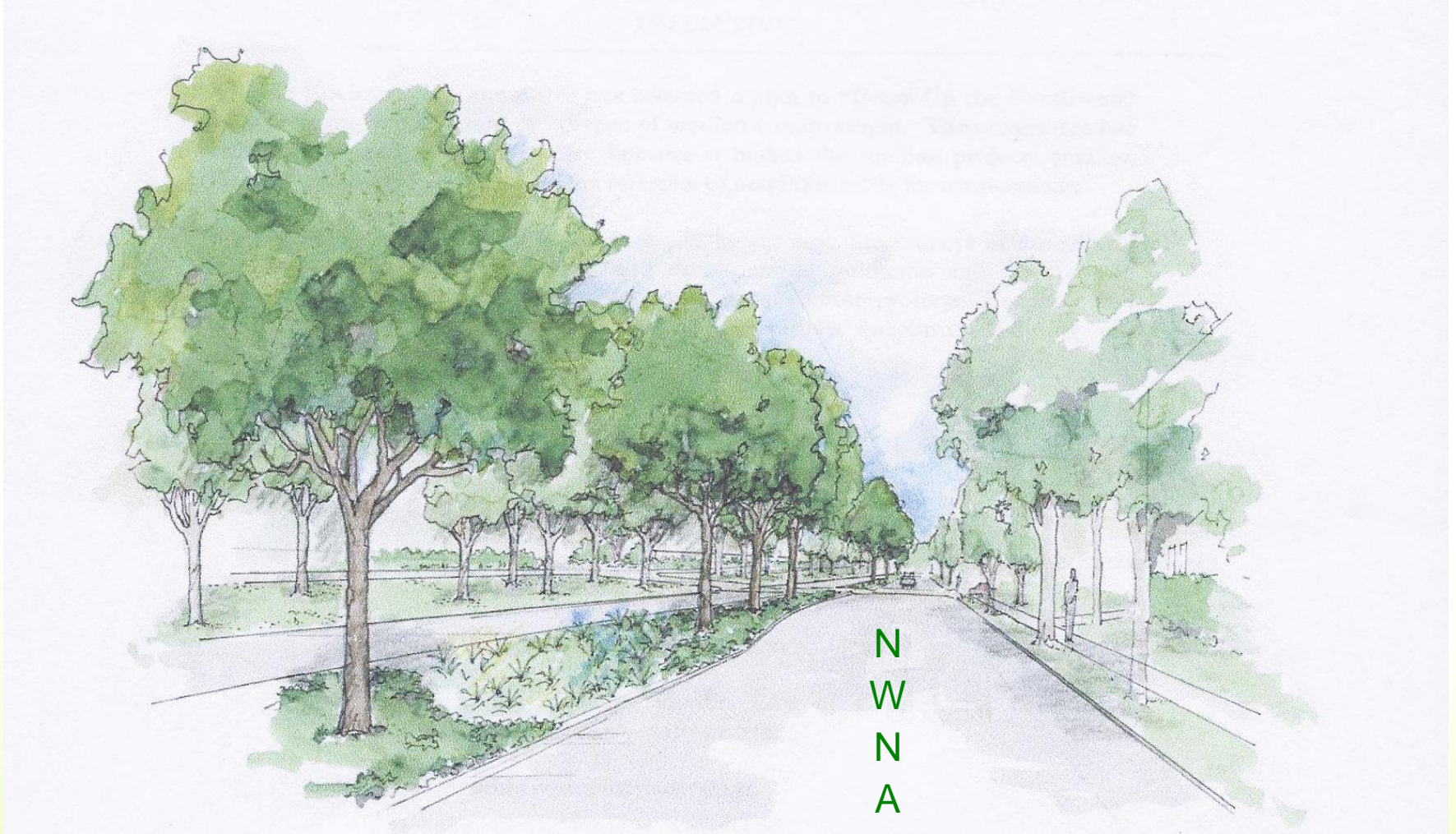


# *Dress Up the Northwest*





**ENVIRONMENTAL COMMITTEE**

**JUDY HARVEY**

**BARBARA WENZ**

**STEVE FISCHER**

**BEV MOODY**

**SUSAN JLEZYSZYN**

**Stella Peters**





# Mission Statement

***The Environment Committee is united to build community pride by beautifying the crossroad medians in the Northwest Cape within the association's boundaries.***

❖ **Develop two different prototypes of median enhancement that makes the median projects:**

- Smaller
- More manageable, and
- Reliant on the interests of the neighborhood

- *Develop & implement the prototypes.*
- *Guide and direct interested neighborhoods.*
- *Prepare and provide documentation for a successful outcome.*

# *Actions Taken To Date*

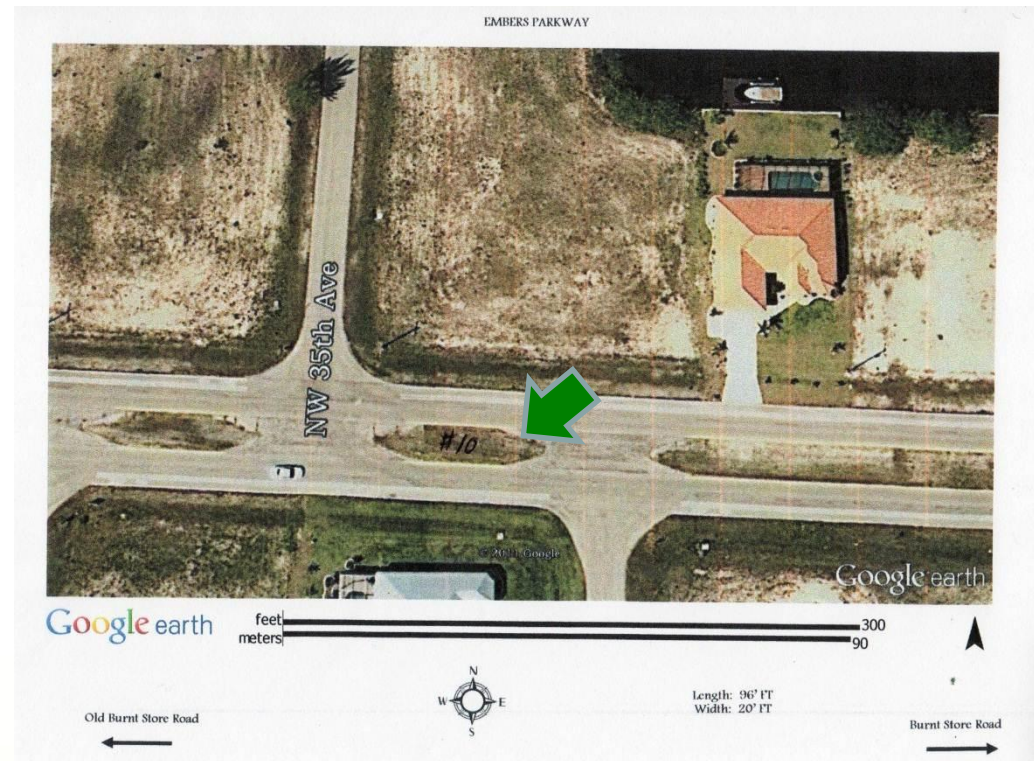
- ✓ Toured the medians in the Cape.
- ✓ Made initial inquires to the City for permitting, acceptable plantings, etc.
- ✓ Held monthly committee meetings.
- ✓ Met with Michael Weston, Senior Forester, Urban Forestry Division.
- ✓ Took median soil samples for analysis.
- ✓ Researched trees, shrubs, and wildflowers including documentation of variables.
- ✓ Determined costs of suitable trees and shrubs for median plantings.
- ✓ Designed and prepared landscape plats.
- ✓ Developed Action Plan.
- ✓ Prepared 'Median landscaping Permit Application' for City.



# Embers Parkway

## Prototype - Location #1

- Includes use of native and non-native plant materials sustainable within a roadway without irrigation.
- Plantings to include several trees, small shrubs & wildflowers.

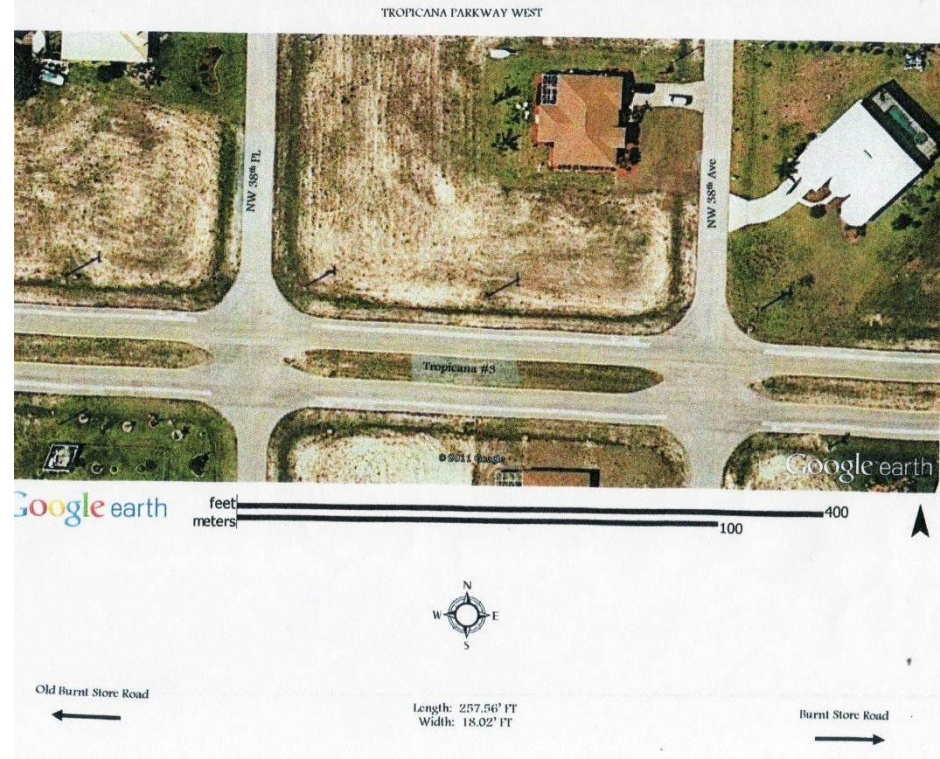


Small median on Embers Pkwy. between NW 35<sup>th</sup> Ave. & NW 35<sup>th</sup> St. Size: 96 ft. x 20 ft.

# Tropicana Parkway

## Prototype - Location #2

- Plantings will be trees down the middle with small grasses or shrubs in between.
- Wildflowers will be planted in triangular sections at each end of the median.



Standard size median on Tropicana Pkwy.  
between NW 38<sup>th</sup> PL & NW 38<sup>th</sup> Ave.  
Size: 297 ft. x 18 ft. Median lacks irrigation.

# *PROJECTION MATURE MEDIAN LANDSCAPING*





# Planting Requirements

- ✓ Obtain permission to plant on the sites.
- ✓ Determine restrictions/constraints on site planting.
  - *Distance from utilities (overhead and underground)*
  - *Liability waivers/volunteer sign-up process*
- ✓ Plantings will begin on July 7, 2012 (rainy season) and must be completed within the city's 30 day guideline.
- ✓ Planted trees must be a minimum of 24 inches high.
- ✓ Trees to be planted **no** closer than 20 feet from the edge of the intersecting roads.
- ✓ *Mulch, tree guards and stakes will be used to make care easier.*

# *Maintenance Concerns*

- Plantings will be low to no maintenance selections.
- Crossroad Co-Captains will coordinate clean-up and light maintenance/pruning, as needed as well as scheduling neighborhood volunteers.
- Small signs will indicate wildflower seeding and staked in applicable areas.



**Possible Nwana  
Adopt-A-Median Initiative.**

# Cost Analysis

Trees/Shrubs/Wildflowers	Approximate Size	Approximate Cost	Approximate #	
			Location 1	Location 2
Fiddlewood	5-6 ft	<\$100/ea	TBD	--
Geiger, Red or White	5-6 ft	<\$100/ea	TBD	--
Oak, Sand	5-6 ft	<\$100/ea	TBD	--
Pines, Slash	4-5 ft	\$50/ea	--	7
Grasses/Shrubs (various)	3 gallon	<\$20/ea	TBD	20
Wildflowers	Seed Packets	\$3/ea	TBD	20
Mulch	Truck Load	Free	Free	Free

***Tree species are drought and wind resistant, and recommended by the Urban Forestry Division. All shrub and grasses ultimately selected for plantings will follow these guidelines.***

# *Planting Day Logistics*

- ✓ **All supplies on-site 30 minutes before volunteers arrive.**
- ✓ **Volunteer check-in, liability releases**
- ✓ **Distribute Dress Up the Northwest T-shirts**
- ✓ **Set up volunteer water station**
- ✓ **Organize Planting Process (set up trees, plants, mulch, water, staking, and clean-up)**



# *Potential Fundraising*

- ✓ **Sponsorship from the NWNA, Inc.**
- ✓ **Silent Auction**
- ✓ **50/50 Raffle**
- ✓ **Door-to-Door Donation Campaign**
- ✓ **Grants from local foundations**





**QUESTIONS?**